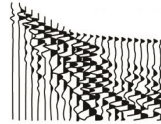


**PRODUCT  
DATASHEET**



[www.marine-seismic-equipments.net](http://www.marine-seismic-equipments.net)

**BOOMERS  
FOR UHR SEISMICS**



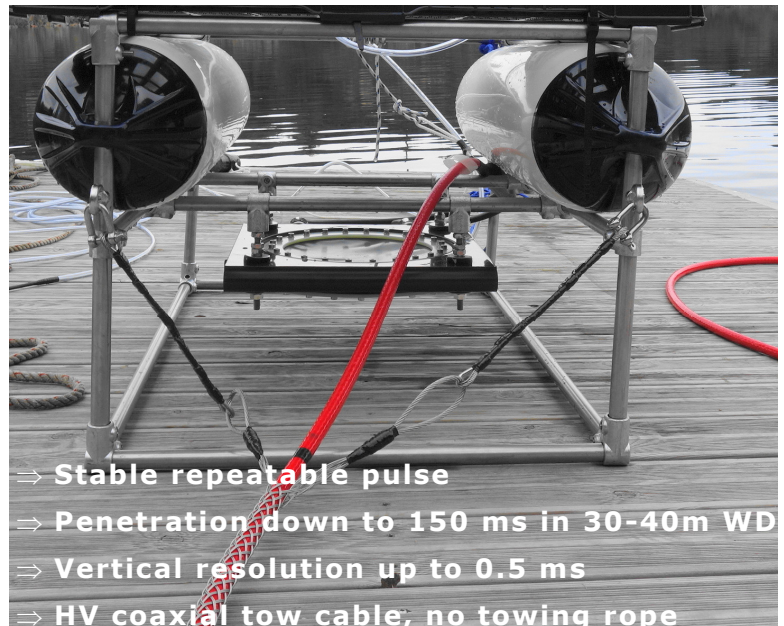
**UHR  
SOUND-  
SOURCE**

The SIG BOOMERS are dedicated to UHR ultra high resolution seismics.

The boomer plate is the sound source of the BOOMER system. It is an electrodynamic transducer. It is powered by an impulsive electrical energy source like a SIG Pulse.

Dedicated to continuous reflection seismic profiling. It has the advantage of being operational in fresh water, lakes, estuaries, as well as marine environments.

The boomer plate is mounted on a catamaran, and towed with a high voltage coaxial cable.



**BOOMER PLATES**

**Maxipulse 300**

**Maxipulse 500**

**Dimensions :**

38 x 38 x 8.5 cm

51 x 51 x 8.5 cm

**Weight (in air):**

10 kg

37 kg

**Source level :**

227 dB re  $\mu\text{Pa}$  @ 1 m @ 300 J

225 dB re  $1\mu\text{Pa}$  @ 1 m @ 500 J

**Pulse width :**

0.12-0.15 ms

0.2 ms

**Frequency spectrum :** 500 Hz-14 kHz

400 Hz-14 kHz

**Input power :**

Max 1 pulse/s @ 300 J

Max 2 pulse/s @ 500 J

**A p p l i c a t i o n s**

- ◇ Subbottom profiling
- ◇ Stratigraphic studies
- ◇ Surveys in fresh waters & marine environment

**C o m p l e m e n t a r y e q u i p m e n t s**

- ◇ SIG Pulse energy source
- ◇ SIG 16 streamer
- ◇ Compatibility with any data acquisition system

**SIG BOOMERS**

S.I.G. France  
11 P.A. la Druge Chevaux  
44130 BOUVRON  
FRANCE

Tel : +33 (0)240 56 31 16  
[www.marine-seismic-equipments.net](http://www.marine-seismic-equipments.net)

## BOOMERS FOR UHR SEISMICS



**UHR  
SOUND -  
SOURCE**

### High-voltage tow-cable

The red tow cable is a coaxial power cable of 2x16 mm<sup>2</sup>, with high-grade polyurethane jacket submersible. The aramidic strength member allows a working load of 500 DaN. And the stainless steel cable grip eases the pull of the catamaran frame. On the dry end, the MC connectors are special connectors mating to the SIG energy sources, with safety microswitches.

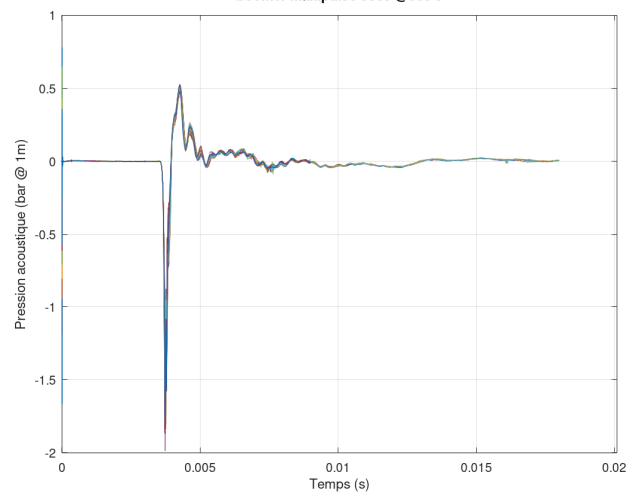


### Boomer pulse signature

The boomer pulse signature has a broadband spectrum between 500 Hz and 14.000 Hz, depending on the energy applied.

<b>HV cable</b>	<b>BR25 to BR100</b>
<i>Length :</i>	From 25 to 100 m
<i>Dry end termination :</i>	2 special MC Connectors MA048
<i>Wet end termination :</i>	2 RMK 1/10 AWG single pin male with locking collars
<i>Coaxial cable :</i>	16 mm <sup>2</sup> inner core, PU inner insulation
<i>Jacket/colour :</i>	PU special submersible, RED
<i>External diameter :</i>	20.8 mm
<i>Weight :</i>	605 g/m
<i>Density :</i>	1.78
<i>Static bend radius :</i>	100 mm
<i>Dynamic bend radius :</i>	200 mm
<i>Working load :</i>	<500 DaN
<i>Breaking strength :</i>	>1500 DaN

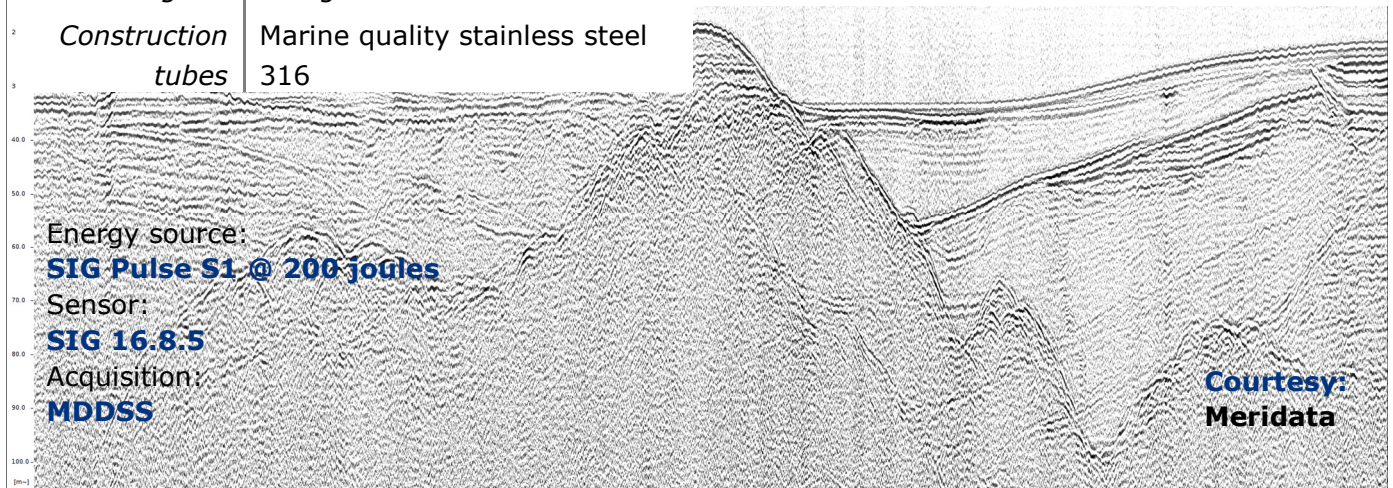
boomer maxipulse 500J @500 J



#### **Catamaran** | **SIG**

<i>Dimensions :</i>	125 x 90 x 50 cm
<i>Weight :</i>	18 kg
<i>Construction tubes</i>	Marine quality stainless steel 316

Energy source:  
**SIG Pulse S1 @ 200 joules**  
Sensor:  
**SIG 16.8.5**  
Acquisition:  
**MDDSS**



**Courtesy:  
Meridata**